



# AAUW Texas Membership Link

Volume 1 Issue 2  
October, 2010



## AAUW Texas Membership Link

What an exciting time to be a Membership VP! AAUW will be celebrating it's 130th Anniversary beginning November 1, 2010 and there are several exciting incentives being offered for membership at ALL Levels.

NEW during this 130 year Celebration is the dues reduction for Graduate Students. From Nov.1, 2010 to October 31, 2011, Graduate students can join AAUW for \$18.81! That's right..... \$18.81 (as they would say on TV infomercials). That's a savings of just over 40% What a G-R-E-A-T opportunity to recruit Graduate Students into your Branch and AAUW.

### Chapter Leaders Playground

#### Get Members Excited About Your Chapter



On September 27th, Cynthia D'Amour explored the dynamics behind a compelling vision and simple steps you

Another 'awesome' membership 'deal' is being offer to NEW College/ University Partners. During this one year Anniversary Celebration, new College/University Partners may become AAUW Partners for \$130.00 Regardless of their size. Major savings for our larger Universities in Texas! Currently, Texas has seventeen C/U Partnerships. However, there are eight C/U Partners that have allowed their partnerships to lapse over the past several years. We would very much like for those seven colleges and universities to become partners again as well as add NEW C/ U Partners to our list. District Repre-

*(Continued on page 3)*

take to create one. When members are excited about your chapter, they are more likely to say "yes" to getting involved. As a leader, you need to know how to create an irresistible vision of

*(Continued on page 2)*

#### Inside this issue:

Chapter Leadership Playground	2
Did you Know.....	2
AAUW Social Media Task Force	3
Membership Link	3
State Board Contact Information	4

#### Special points of interest:

- AAUW's 130 Year Anniversary Membership Incentives
- Create Meetings that WOW! Chapter Leaders Playground Archive
- National Members (aka MAL's)
- SiteWise for AAUW



## Chapter Leaders Playground



*(Continued from page 1)*

where your chapter is going – and why the work of the chapter matters. If you want to turn up the sizzle in your chapter and create a surplus of volunteers, you'll want to listen to this program.

### Create Meetings that WOW!

On October 7th, Cynthia D'Amour welcomed Jeff Hurt, Director, Education & Engagement, Velvet Chainsaw Consulting to the Playground. Jeff is a leading innovator and well-known blogger in the meetings industry. If you want members to show up for your

meetings, you've got to give them a dynamic experience. Jeff answered questions and shared some fabulous ideas about what you can do to transform your chapter meetings from ho-hum to WOW! If you want to get your members to meeting – and keep them coming back, this is a must-listen.

### Attract Future Leaders by Setting Them Up for Success

On October 13th, Cynthia D'Amour, MBA explored the power of developing future leaders. What works and how to do it – without breaking your budget.

Do you have members eager to step up to leadership? Or keep recycling the same old leaders through the positions? What's the difference? Your chapter's commitment to leadership development. Members who feel confident are more likely to want to be leaders. If you want to attract more future leaders for your chapter, listen

Visit the *Playground's* website today; [www.chapterleadersplayground.org](http://www.chapterleadersplayground.org) AAUW members can join for free, and many AAUW leaders are already there.

## Did You Know.....

### 1. There are over 1,200 AAUW National Members in Texas.

These National Members are not Branch or State members. Many do not live in an area where there is a local Branch and then many National Members do not wish to join a Branch. Yet, we need to try to inform these members of what AAUW Texas and local AAUW Branches are accomplishing. The questions are: how and is it really worth the effort, after all, it hasn't worked in the past.

If your Branch is interested in

information concerning AAUW National Members, please contact your District Representative. They have the information you need and will be glad to get it to you.

Over the next several weeks, I will begin an e-mail campaign designed to let our National Members know more about AAUW Texas. First item on my list? You guessed it 'LIKE' AAUW Texas FaceBook. (That will help me to discover viable e-mail addresses which I will pass along to our District Representatives) It is also a

very easy way to keep everyone informed on AAUW issues and State/Branch activities.

Second Item on my list: Direct National Members to local Branch websites.

Every project needs a starting point, this will be mine. Where will your Branch start?





## AAUW Social Media Task Force

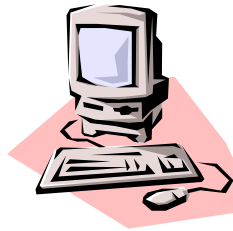
At this time, we have 143 people following the AAUW Texas FaceBook postings. Are you or

members of your Branch among those 142? If not AND if you FaceBook, you need to check us out at [www.facebook.com/aauw.texas](http://www.facebook.com/aauw.texas) and "Like" us.

Is your Branch in the market for a Branch website or a New website? ...A website maintained by someone other than a Branch Member with limited volunteer time? SiteWise for AAUW is now available for a

greatly reduced rate of only \$4.99 per month for branches under 100 members to \$9.99 per month for branches with over 100 members or for state sites.

Those branches that sign up within the next 60 days will receive FREE set up and design support, normally an additional \$199- \$299 fee.



Tricia will send you the new subscriber agreement and snapshot of the new SiteWise for AAUW homepage template for your exclusive review. This is the

first time they have shared this new layout publicly! She will also send you links and updates to the first publicly launched SiteWise for AAUW sites.

Additionally you can learn more, access documents and demos at [www.sitewise4aauw.com](http://www.sitewise4aauw.com).

Tricia welcomes your call or email and can be available for a conference call with your leadership in moving forward.

SiteWise for AAUW  
Ph (801) 550-3197  
Fx (801) 998-3888  
[tmcgarry21@gmail.com](mailto:tmcgarry21@gmail.com)  
[www.sitewise4aauw.com](http://www.sitewise4aauw.com)

## AAUW Texas Membership Link: AAUW 130th Anniversary

*(Continued from page 1)*

representatives, Branch Membership VP's and College/University Representatives, we have our work cut out for us this Anniversary Year.

If we were to set a goal of a 75% increase, that would be 12 C/U Partnerships.... Eight of those 12 would be our currently lapsed partners, with the addition of five new partnerships. Is that an unrealistic goal? Not if we focus our efforts. AAUW Texas does not want C/U Partners just occupying space on a list. We want to grow AAUW on C/U campuses. We are wanting to establish viable college/university student affiliations. Take for example Texas Tech in Lubbock. They were on the September

2010 list of Lapsed Partnerships. Lane Powell has worked hard the past few months to 'connect' and re-establish the TX. Tech partnership as well as work with Tech students wanting to establish a Student Affiliate Branch on campus. She was even successful enlisting the appointed C/U campus representative in AAUW and Lubbock Betty Anderson Branch! Way to go Lynn!!!! So, one down 11 more to go to reach a goal of 75% increase in current Texas C/U Partners.

South District Representative Enny Schissler is 'working on' the re-partnership of Alvin College and South District, South Representative, Rose-marie Herrmann, and Har-

lingen Branch are currently cultivating a new C/U Partnership with UT Brownsville. Personally, I have been in contact with Cisco College, Abilene Educational Campus hoping to establish a new C/U Partnership and will be making contact with Abilene Christian University to re-establish their partnership. When we are successful, that will be 4 more, leaving 7 C/U Partnerships shy of reaching a goal of 75% increase in Texas C/U Partnerships. Can we accomplish this goal? It's beginning to look as though we can.

*Jeannie Best*



E-mail: [txaauw.jbest@gmail.com](mailto:txaauw.jbest@gmail.com)

Website: [www.aauwtexas.org](http://www.aauwtexas.org)

Primary Business Address

Jeannie Best

849 Kenwood

Abilene, TX 79601



Breaking through barriers for women and girls



We're on the web

[www.aauwtexas.org](http://www.aauwtexas.org)

[www.facebook.com/aauw.texas](https://www.facebook.com/aauw.texas)

AAUW Texas State Board Members Contact Information

**Margaret Bentley, President**

[info@aaauwtexas.org](mailto:info@aaauwtexas.org)

**Susan Alami, Financial Officer**

[finance\\_officer@aaauwtexas.org](mailto:finance_officer@aaauwtexas.org)

**Rosemary Morrow, Secretary**

[boardsecretary@aaauwtexas.org](mailto:boardsecretary@aaauwtexas.org)

**Mary Edwards, Program VP**

[programvp@aaauwtexas.org](mailto:programvp@aaauwtexas.org)

**Jeannie Best, Membership VP**

[txaauw.jbest@gmail.com](mailto:txaauw.jbest@gmail.com)

[programvp@aaauwtexas.org](mailto:programvp@aaauwtexas.org)

**Lucy Barrington, AAUW Funds**

[ef@aaauwtexas.org](mailto:ef@aaauwtexas.org)

**Margo Johnson, State Web Master**

[webmaster@aaauwtexas.org](mailto:webmaster@aaauwtexas.org)

Since 1881, AAUW (formerly known as the American Association of University Women) has been the nation's leading voice promoting education and equity for women and girls. We have a nationwide network of nearly 100,000 members, 1,000 branches, and 500 college/university institution partners.

For more than 128 years, AAUW members have examined and taken positions on the fundamental issues of the day — educational, social, economic, and political.



District Representatives

Elizabeth Newell, Central District

[centralrep@aaauwtexas.org](mailto:centralrep@aaauwtexas.org)

Stephany Compton, North District

[northrep@aaauwtexas.org](mailto:northrep@aaauwtexas.org)

Jan Domaracki, North District east

[northrep-east@aaauwtexas.org](mailto:northrep-east@aaauwtexas.org)

Martha Matthews, North District west

[northrep-west@aaauwtexas.org](mailto:northrep-west@aaauwtexas.org)

Enny Schissler, South District north

[southrep-north@aaauwtexas.org](mailto:southrep-north@aaauwtexas.org)

Rosemarie Herrmann, South District south

[southrep-south@aaauwtexas.org](mailto:southrep-south@aaauwtexas.org)

Joy Vann, West District

[westrep@aaauwtexas.org](mailto:westrep@aaauwtexas.org)